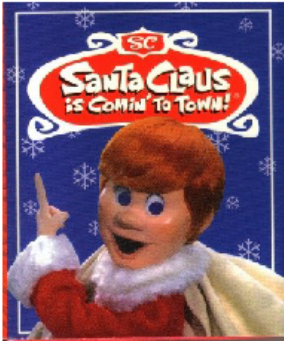


Village Voice

of Spencer, WI

SANTA CLAUS IS COMING TO TOWN!
SATURDAY, DECEMBER 5
 Starting at 5 pm

Parade will start at approximately 5:15pm with the route along Wendell St and ending by the Village Christmas tree. Please line up along Wendell St and around the park on S Park St in family groups with 6 ft. between groups.



GIFT BAGS FOR CHILDREN ALONG THE PARADE ROUTE

FOLLOW SANTA TO LIGHT THE VILLAGE CHRISTMAS TREE

FREE HOT DOGS SERVED BY THE MUNICIPAL BUILDING BEFORE AND AFTER THE PARADE UNTIL GONE

FREE HOT CHOCOLATE AND COOKIES

BETWEEN NOW AND DECEMBER 15TH, CHILDREN CAN WRITE A LETTER TO SANTA AND DROP IT AT THE VILLAGE OFFICE, OR SPENCER BRANCH OFFICES OF PARTNERS BANK AND CITIZENS STATE BANK, SCHOOL, OR BRING IT TO THE SANTA EVENT AND THERE WILL BE A BOX BY THE CHRISTMAS TREE. SANTA WILL WRITE BACK TO THOSE WITH RETURN ADDRESSES.

SANTA CLAUS IS COMING TO TOWN, DON'T MISS HIM!

Sponsored by:



School District of Spencer, SEL Committee

WORD OF THE MONTH FOR DECEMBER

RESPECT

A feeling or understanding that someone or something has value



What's Rockin' in Rocketville!

By Mike Endreas

District Admin./School District of Spencer

This year more than ever it is important to keep our focus on what is truly important in our lives. Please be safe and keep yourself healthy as all indications show it will be a difficult push through the pandemic but there is a light (vaccine) at the end of the tunnel.

As a District we get asked often as to when we will shut down and go virtual. My standard answer has been, and will be, when we feel the safety of our students and staff are in jeopardy, or when we are unable because of lack of staff to carry on our regular school day. I am proud to say the School District of Spencer is once again setting the bar for the area. At the time of writing this in Marathon County, 2.8% of the population is currently Covid positive. At the same time in the School District of Spencer, 0.28% of the population is currently Covid positive. What this tells us is that our kids are safer at school than in the community. The current plan we have in place is working and we intend to stay the course until that changes. The work of our Staff, students and parents, supported by our Board of Education, has been key to the low rates of incidents in our District.

In this difficult year, in trying to do anything normal, I think there are some ideas being floated to do some virtual events through our music department. If this does happen please keep a lookout on our Facebook page and school website!

See ROCKIN' on page 3.

**BREAKFAST
LUNCH
DINNER
DRINKS**

OPEN FOR BREAKFAST
DAILY AT 7AM



103 E. CLARK STREET | SPENCER
715-659-4333
www.nutzdeepbarwi.com

NUTZ DEEP II
BAR AND GRILL
Spencer, WI

Country Wireless *Quality High Speed Wireless
Central Wisconsin*

205 W. Willow Drive, Spencer, WI


- Local Company / Local Support
- Many Options to Fit Your Needs
- Unlimited Usage
- No Additional Costs
- No Hidden Fees!
- Download speeds up to 25 mbps

715-389-8584
Call today for free price comparisons

www.countrywireless.com

The Plan-it Earth Health Centers
"Bringing the Worlds of Medicine, Health Foods & Natural Vitamins Together"

Alternative Medicine



Alternative Support for:

- *High Cholesterol
- *Hormone Replacement
- *High Blood Pressure
- *Sleep Disorders
- *Depression, Stress, & Anxiety
- *Lack of Energy

101 W. Clark St. P.O. Box 138
Spencer, WI 54479-0138
Spencer Tele. (715) 659-5436
148 N. Central Marshfield, WI 54449-2107
Marshfield Tele. (715) 384-7100

*"Your Answers to a Happier,
Healthier & Longer Life"*

GOSSE CHIROPRACTIC LLC

Dr. Clint Gosse

*Cloud Nine
Massage, LLC*
Tracy Bauer, CMT

SPENCER'S CHIROPRACTIC & MASSAGE THERAPY HEAD-QUARTERS

*Located in the
Industrial Park*
208 W. Cedar St.

Call **715-659-4411**
Now selling CBD oil!

Hedlund Agency
Since 1954

Wisconsin's Health Insurance Specialists

A Division of Spectrum Benefit Solutions of Central WI LLC
132 W. State Street, Medford, WI 54451

Spectrum
BENEFIT SOLUTIONS LLC

Individual and Group Coverage
Medical * Dental * Vision * Life * Disability
Medicare Supplement * Advantage * Part D Prescription
715-748-4213
Industry Leading Service You Deserve and Trust!
Call Becky Gorst @ 715-321-6061

CSB *Citizens State Bank of Loyol*
"Community Owned ~ Community Minded"

Harley Meyer
AVP & Branch Manager
302 S. Pacific Street
PO Box 20
Spencer, WI 54479



Phone: 715.659.5159
800.599.8399

www.csbloyal.com
MEMBER FDIC

hmeyer@csbloyal.com
NMLS# 1285479



The Spencer FFA's Project Merry Christmas has been one of the most popular events among Spencer community members. It is an all-day event that includes home visits with caroling, goodie bags and Christmas cheer.

This year Project Merry Christmas will be done by appointment only. If you are interested in a visit and all that goes with it please contact Mr. Zimmerman via email at mzimmerman@spencer.k12.wi.us or by phone at 715-659-4211, ext. 3210

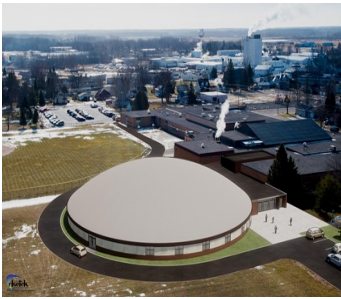



ROCKIN' from page 1

Project Merry Christmas, through the Spencer FFA, will be done via appointment only. If you are interested in receiving a gift box please contact Mr. Zimmerman via email mzimmerman@spencer.k12.wi.us or by phone 715-659-4211 ext. 3210.

I am happy to say that we were able to complete a season in all of our Fall sport offerings. With that, plans are underway to create an opportunity for our Winter sports programs with definite limitations and precautions. I do know fan attendance will be limited but virtual viewing will be an option through the school district Facebook page.

Our building project continues to plod along. The walls of the dome are being erected with an inflate date of the dome sometime early to mid December. At the time of writing this we are still in the process of solidifying bids and assuring we are getting apples to apples comparison. This definitely has been a learning experience.



At the board level we will be discussing and analyzing our budget to determine a referendum question for the April ballot. Our current revenue cap exemption sunsets at the end of this school year so all data points to the District to ask to extend that in some shape or form for the future. It will be a discussion point on our December 16th

regular board meeting.



Happy Holidays from the School District of Spencer and the Spencer Rocket Family!

at the **TACK** Life is good. It's a fact that's tough to dispute, though many of us are quick to whine about any number of things, not the least of which is a pandemic that may keep us separated from our families at the very time we feel we most deserve to gather.

While this pandemic continues to bring us down in more ways than we care to admit, the Tack continues to be optimistic that eventually there WILL be a show on stage in 2021. The most recent addition to the list of postponements is Helen Welch's "A Carpenter's Christmas," previously scheduled to take place on Saturday, December 5. Helen has cancelled her plane tickets, and all of the Tack's preparations have ceased for what would have been a FABULOUS show! She WILL be here in 2021, so if you have tickets, have no fear! They'll be good then!

At some point, maybe in December, tickets to the rest of the season will be available online and through the ticket office. Visit lucilletackcenter.com to purchase up to two seats at any time. You may also call 715.659.4499; leave a message and someone will return your call. Unless circumstances change dramatically, the audience for each performance will be limited to 25% capacity, so it is unlikely there will be seats available at the door. If you need tickets for a larger group of people from the same household, the ticket office can help make that happen. Just give a call!

And, lest we forget that especially during this holiday season, Tack gift certificates make a perfect present for everyone on your list. Purchase online 24/7!

In case you haven't heard our exciting news, the Tack was a most appreciative recipient of a \$20,305 Cultural Organization Grant from the State of Wisconsin! On November 5, Governor Tony Evers and the Wisconsin Department of Administration announced \$15 million in investments providing economic stabilization for Wisconsin arts organizations hard hit by the ongoing COVID-19 pandemic.

See TACK on page 5



Local service.



mcneelyinsurance

SPENCER • 715.659.2504
www.mcneelyinsurance.biz

Great insurance.

Auto-Owners
INSURANCE

LIFE • HOME • CAR • BUSINESS

Exceptional Service ♦ *Affordable Options*

Our commitment to you--Always



Call **715.659.4545**

901 South LaSalle Street, Spencer, WI
www.lifetributesfuneralhome.com

R & R FLOORING & FURNITURE

CHRISTMAS GIFT IDEAS !



SPENCER

SUPPORT

BUSINESS

 marshfieldAreaSports.com



DAILY SPECIALS



MONDAY

\$2 CHEESE BURGERS



Limit 5 per customer per visit.

TUESDAY

HALF PRICE CONEY DAY



WEDNESDAY

\$5 MUSHROOM ONION MELT COMBO



THURSDAY

\$6 DOUBLE CHEESEBURGER COMBO



FRIDAY

\$6 SINGLE BACON CHEESEBURGER COMBO



Phone: 715-368-1144

TACK from page 3 This program is funded through federal Coronavirus Aid, Relief, and Economic Security (CARES) Act dollars. Thanks to all advocates for making the case to Governor Evers, DOA, and state representatives that investment in creative people, businesses and communities is the way forward for Wisconsin.

Just a reminder that your most up-to-the-minute information on Tack events can be found at lucilletackcenter.com, in our eblasts (sign up on the website) and from the ticket office phone message. Whenever you purchase tickets, you will automatically receive email reminders and updates for the show.



LuCille Tack Center for the ARTS

From the Tack Board of Directors and volunteers, we wish you Happy Holidays and the best of health in 2021. We are grateful for your continued support and will see you soon, back at the Tack!

Spencer Library news....

The Spencer Library will continue to provide both curbside appointments (where you are able to come in and browse and pick up books). Please call the library at 715-659-3996 for your appointment or curbside pick up. Here are the hours again:

Monday: Curbside 1-3pm. Appointments 3-7pm. Tuesday, Thursday and Friday: Appointments 10am-2pm. Curbside 2-4pm. Wednesday: Appointments 1-5pm. Curbside 5-7pm.

The Christmas hours are as follows: December 24th + 25th we will be closed. The Spencer Library will be open on December 28th.

The Spencer Library will be offering a Grab N Go craft from December 7th- 11th. "A Magical Snowman". The craft will contain everything you need to make your Scratch Art Snow-

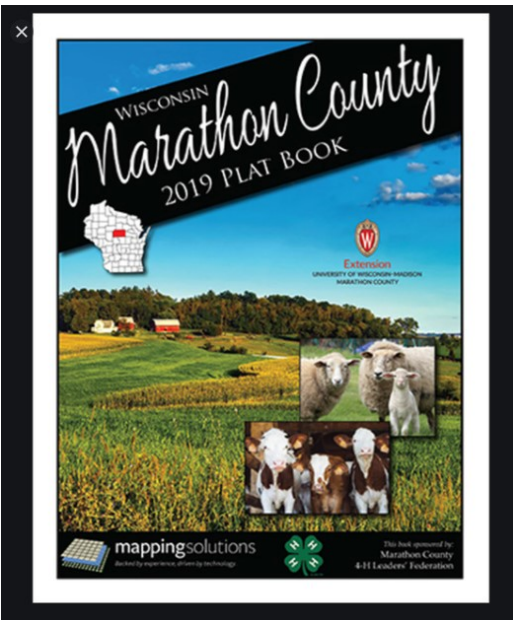
Audrey Kohlbeck

Spencer Branch Coordinator

Marathon County Public Library - Spencer Branch | 105 S. Park St., WI 54479

audrey.kohlbeck@co.marathon.wi.us | 715-659-3996 (direct) / 715-659-3996 (general)

www.mcpl.us / info@mcpl.us | [Facebook](#) | [Twitter](#)




Marathon County Plat Books are available at the Spencer Village Office for \$40.00. They are available year round through the Brighton Recneps 4-H Club. If you have questions you can contact Jackie Soback, the Brighton Recneps General Leader at 715-659-5186.



Spencer Area Historical Society



There will be no scheduled open hours until March.
We do open by appointment 715-659-5182

 **From the Editor** Ron Draeger sent me some more stuff from the historical society. It's always quite interesting and especially unique because much of it comes in it's original form. It's somewhat of a hodge-podge (my fault, not his) but enjoy. Remember the Spencer Fire was 1886 so some of this was shortly after that I believe.

From Ron Draeger, Spencer Historical Society. The Ponderosa Apartments were the site of the Stoltenow brickyard. The pond was created as the clay was removed. After the Spencer Fire many of the businesses preferred to have brick frontings. My own interpretation of how the apartments got their name. The first sign outside the apartments was painted by Glen Rose. He is the father of Mrs. Roger (Mary Ann) Bymers. Pond plus Rose seemed a little obvious at the time. (just guessing).

SPENCER.

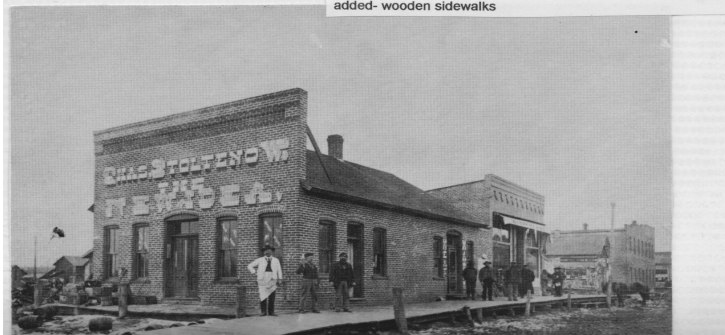
Spencer is located in the southwestern part of **Marathon county** on the Wisconsin Central railroad. Two yards are located in the vicinity of this village, one of which is owned by **Charles Stoltenow** and the other by **William Baedeker**.

The Stoltenow Brick Yard is situated at the west end of the village. The clay has a working depth of about five feet, is of a yellowish blue color and burns red. A blue clay which also burns red occurs a short distance north of the plant. The clay is mined with a pick and shovel and soaked in a vat over night. The brick are moulded in a soft mud machine, dried in hacks on the yard, and burned in scove kilns. This yard was opened in 1887 and has been operated each year since that time. The average annual

output during the last three years has been about 200,000 brick. The market price in 1899 was \$6.00 per M. kiln run.

The plant owned by **William Baedeker** is located about three miles north of Spencer and is close to the Wisconsin Central railroad. The clay is very similar to that which occurs at Stoltenow's yard. The brick are moulded by hand, dried in hacks on the yard, and burned in scove kilns. The color of the brick is red. This yard was opened in 1898 and the output during that year was 150,000.

Chas. Stoltenow Saloon on North LaSalle looking south notice building was a one story before 2nd story living quarters was added- wooden sidewalks



LICKED UP BY THE FLAMES

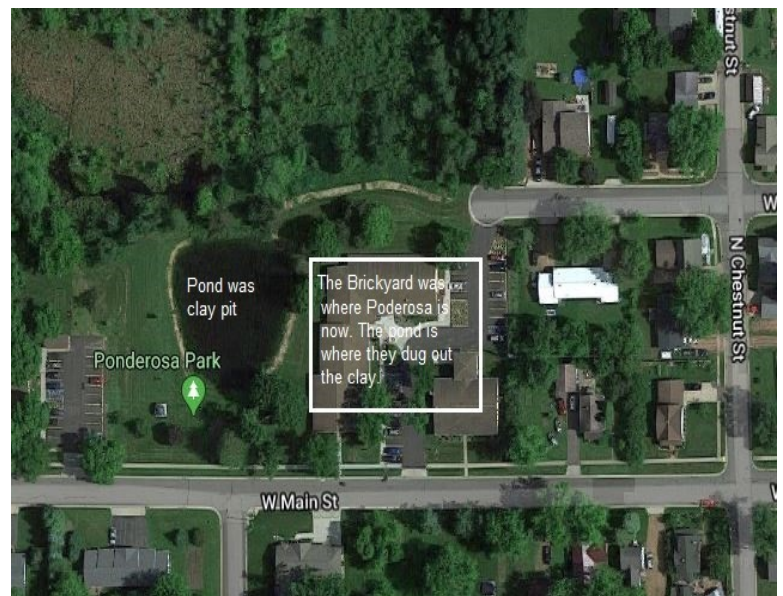
A \$3,000 BLAZE AT SPENCER.

Hall's Mills also Reported to have Been Burned—Other News Matter of Interest to All Our Readers.

SPENCER, June 28.—Last Saturday at about 5 o'clock p. m., an alarm of fire was sounded. Chas. Stoltenow's saloon and dwelling were in flames and soon the whole town was working to conquer the flames. It was of no avail, however, and soon the buildings were burned to the ground. It is believed the fire started from a cigar stub under the sidewalk. After the fire had got beyond control attention was turned to saving the contents of the building. Nearly everything was saved from the residence part, but comparatively nothing from the saloon. A strong wind was blowing from the west making it doubly hard to fight the flames. The barn across the street was saved only through hard work and adjoining buildings had to be wet down to keep them from burning. The ice house was torn down and dragged across the street which greatly lessened the chances of the flames spreading. Altogether Spencer had a narrow escape from a most devastating conflagration. The loss to Mr. Stoltenow is about \$3,000, insured for \$1,000 in G. E. Ingalls' agency of Marshfield. Mr. Stoltenow will rebuild as soon as possible. He intends erecting a brick block on the site of the burned buildings, the ground floor to be used as a saloon and meat market and the second floor as a hall. He also intends building a residence on his farm west of the city. The loss by the fire to Mr. Stoltenow is a severe one but he will not let this misfortune discourage him.

HALL'S MILL BURNED.

A report was received here yesterday afternoon that the mills and dry kilns of S. C. & C. A. Hall, six miles west of Spencer, were totally destroyed by fire. Further particulars could not be learned at this writing.





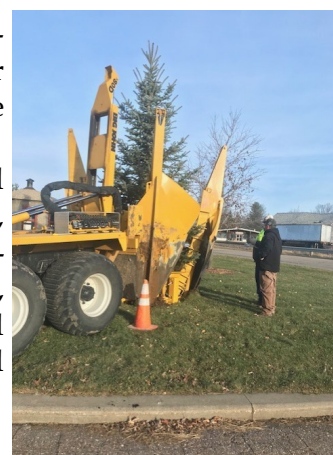
The trimming of the community Christmas tree will take on a new light (no pun intended, yeah, right) this year, since the Spencer Woman’s Club and some other Spencer folks put their heads together to insure that the Village of Spencer will have their very own Christmas tree, year round.

In a phone call with Woman’s Club member Mary Zahn I learned that the Woman’s Club was interested in securing a more, shall we say, permanent Christmas tree. Evidently, last year’s edition blew down in a storm. And since a 14 foot tree each year can’t be cheap, a fake tree was entertained, until the price tag on that seemed a little unreasonable as well. Deb Schafer at the village office filled in the blanks of a few more road blocks the Woman’s Club encountered.

Mary mentioned to me that they got a break of sorts when Dave Buse discovered their dilemma. Dave’s worked for Nikolai Construction about as long as I remember and he mentioned they had a company landscaper that planted trees for clients, piquing the interest of those seeking a Christmas tree alternative. Turns out Scott Hanson, “Scoop’s Tree Relocation Service” on his business card, and who Mary called a “phenomenal man”, was just what the Woman’s Club may have been looking for.

Mary wanted to extend a special thanks to Julie McNeely, community member and Financial Representative at McNeely Financial Services, who offered up a tree from her property. Unfortunately, the new tree guy, Mr. Hanson, deemed that that particular tree was too difficult to remove as the ground was too wet.

Not to worry, Hanson had trees and equipment, (both can be seen in the photos) and soon provided the Village with a permanent Christmas tree. Mary said that at just \$200.00, the price was practically equal to what was shelled out each year, a fair cry from a store-bought replica, and a one-time purchase, Mary dubbed “the Christmas tree of happiness”, that will provide the village with a permanent Christmas tree, unlikely to blow over and more likely be there for years to come. Thanks to Deb for the photos and all involved whether they were mentioned here or not.



Spencer Churches

CATHOLIC

Christ the King

Father Barry Saylor
306 S. LaSalle
659-4480
4:00PM Saturday Evening Mass
8:00AM & 10:00AM Sunday Mass
office@ctkspencer.net

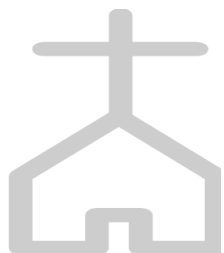
CHURCH OF CHRIST Church of Christ,

B3942 State Hwy 13
659-4796
9:00AM Sunday Bible Study
10:00AM Sunday Worship
7:00PM Wednesday Bible Study

METHODIST

Spencer United Methodist Church

108 Burnett Street
Rev. Kerry Wilson
715-659-5551
9:30AM Sunday Worship
Christmas Eve Service 4:30 + 9pm
Club 3:16 Wed. 3:30– 5:30pm
sumcs@spencerum.church



LUTHERAN

St. John’s Church (ELCA)

Interim Pastor Lowell Bolstad
210167 State Hwy 13
659-5158. stjohsspencer.com
Handicap accessible
Sunday 9am Service with Communion
Masks suggested but not required

Trinity Lutheran(LCMS)

Vacancy Pastor Rev. Chris Schwanz
109 W. Clark Street
659-4006
Sunday School 9:15am.
Sunday Worship Service 10:30am.
12-24: 4pm Service of Lesson +Carols
12-24: 7pm Children’s Service
12-25: 9am Service



KINGS FOOD PANTRY located at Christ the King Catholic Church ~ Wendel Street
OPEN MONDAYS 10AM-2PM

Please use south west entrance, located in basement. All those in need are welcome.

CONTACT US

Village Voice of Spencer
500 S. Jefferson Str.
Spencer, WI 54479

Email:
villagevoiceofspencer@hotmail.com

Phone: 715-659-4710
Steve Pilz, Editor

Spencer Village Hall
phone: 715-659-5423

GROSS
Spencer

102 W. Clark Str. Phone: 715-659-3939

ANDERSON ELECTRIC
715-659-2344
CENTRAL WI'S LEADER IN AG WIRING
905 S LaSalle St
Spencer

RESIDENTIAL FARM COMMERCIAL INDUSTRIAL
TRENCHING AERIAL EMERGENCY GENERATORS PRIVATE WIRING LOCATES


Partners Bank
Marshfield Spencer Stratford
(715)384-4005 (715) 659-2430 (715)687-2411
www.partnersbankwi.com
MEMBER FDIC

Maurer's Mini Storage
RENTING SPACES 10x10 thru 10x32 - 24 HR Access
Outside storage
610 E. Peach St
Spencer, WI 54479
715-659-5851
Hours: Mon.-Fri. 8-5 Sat. 8-noon

Printed publications of the Village Voice of Spencer are available at Spencer Village Hall & Library, Plan-It Earth (Spencer, Marshfield), R+R Flooring, Kwik Trip, Dollar General, Nutz Deep II, Citizens State Bank, Partners Bank, Ponderosa, Gross Ford, A+W, Gosse Chiropractic, Cut Loose and the Spencer Post Office.

Quik PRINT LLC
Offices in Spencer, Medford, Athens, and Marshfield, WI
510 E. Willow Dr.
Spencer, WI 54479
715.659.5514
www.quikprintllc.com
YOUR HOMETOWN PRINTER
Printers of the Village Voice

Community Monthly Newsletter for Spencer Residents

DECEMBER

Sun	Mon	Tue	Wed	Thu	Fri	Sat
For all Church times, see page 7		1 Legion 7pm Village Hall	2	3	4	5
6 Packers vs. Eagles 7:30pm CBS.	7	8	9	10 Sr. Citizen Mtg. 10:30am @ NUTZ. Lion's Club 6:30pm @ Nutz. 4H 7pm Village Hall.	11	12
13 Packers @ Lions Noon FOX.	14	15 Village Board Meeting 6:30pm. Village Hall.	16 School Board Meeting 6:30pm. H.S. Distance Learning Room. Enter door #22.	17	18	19 Packers vs. Panthers 7:25 NFL Network
20	21 	22 COME Meal St. John's 5pm. Carry Out only.	23	24 	25 	26 Happy B.D. Viv
27 Packers vs. Titans 7:20 NBC.	28	29	30	31 	<p>Note: For updated information on school events see the web site at www.spencer.k12.wi.us</p>	